



# GREEN HANDRAIL MOUNTING INSTRUCTIONS

*Models SB & SS Series Safety Stairs or Bridges*

1. After receiving the shipment, unpack the Safety Stair or Bridge from its shipping container. The shipment will consist of the following components.

- |                                 |                                   |
|---------------------------------|-----------------------------------|
| A. 1 - bridge or stair assembly | D. 4 - 1/2" x 2 7/32" clevis pin  |
| B. 2 - front handrail uprights  | E. 6 - 1/2" E-clip                |
| C. 2 - handrail sub-assemblies  | F. 2 - 1/2" x 4 29/32" clevis pin |

2. Attach the front handrail upright to the handrail sub-assembly with two of the 1/2" x 2 7/32" clevis pins & E-clips (See sketch 1-1). This will complete one handrail assembly. Complete the remaining assembly in the same manner as outlined above.

**Note:** These joints must pivot freely. The pin, once installed, must be able to be rotated with your fingertips.

3. Install the safety stair or bridge with handrails to your loading rack or platform (See sketch 1-2). This is accomplished by installing 3/4" bolts (not supplied) through the holes in the bottom handrail uprights and the mounting plates of the unit. Fasten securely to the platform with 3/4" locknuts (not supplied). Each unit will require four 3/4" bolts and locknuts.

**Note:** Remember to position the handrails on the correct side of the unit. The bend in the mounting plate on the front upright extends over the side panel.

4. Attach the front upright to the top of the stair or bridge panels. The hole in the front upright mounting plate will match the hole in the panels. As illustrated in Sketch 1-3, position the front upright over the panel of the unit (the wider yoke section will extend over the panel). Insert the 1/2" x 4 29/32" clevis pin through the upright mounting hole and the mounting hole in the panel, install the E-clip on the pin.

**⚠ WARNING:** Two (2) handrails must be used for maximum safety to prevent falls.

**⚠ WARNING:** To prevent falls, before walking on decking or steps, the unit must be supported at both ends.

Should you experience any problems with this shipment or the product, please do not hesitate to contact your local Green distributor, representative or the factory at 440-934-2180, FAX 440-934-4052, [www.green-mfg.com](http://www.green-mfg.com).



## **BENKO PRODUCTS, INC.**

5350 Evergreen Parkway  
Sheffield Village, OH 44054

(440) 934-2180

Fax (440) 934-4052

[www.green-mfg.com](http://www.green-mfg.com)

Email: [dingram@green-mfg.com](mailto:dingram@green-mfg.com)



# GREEN HANDRAILS

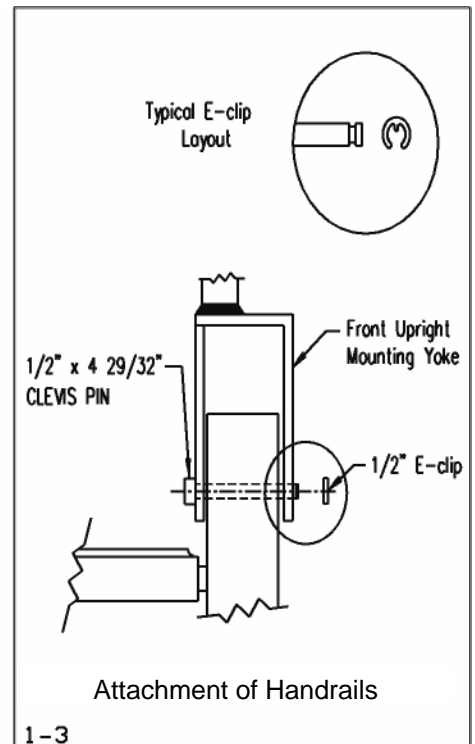
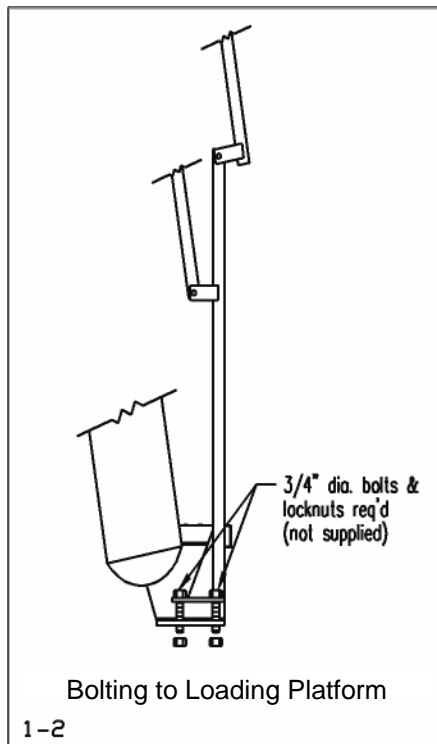
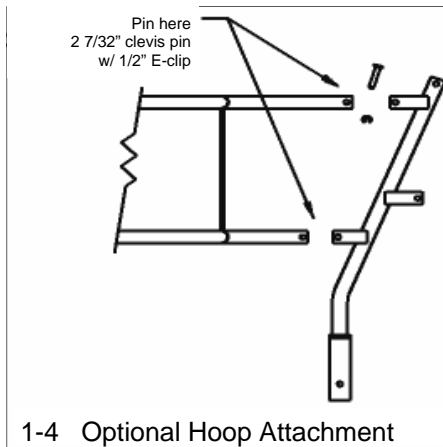
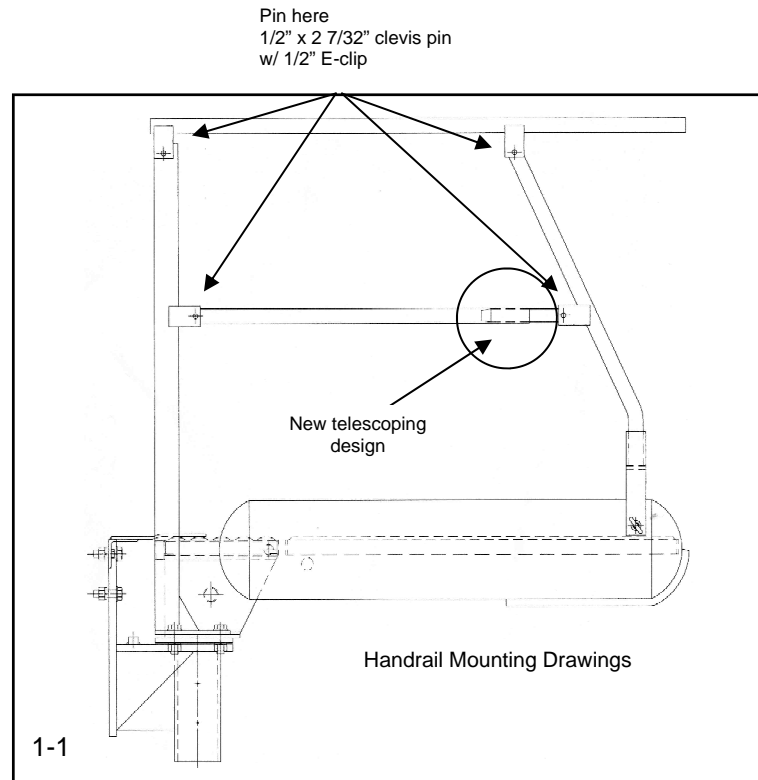
## Yoke Style Handrail Mounting Drawings

### Sketch 1-1 1 Handrail Assembly

### Sketch 1-2 Bolting to Loading Platform

### Sketch 1-3 Attachment of Front Upright Handrails

### Sketch 1-4 Optional Hoop Attachment





# GREEN SAFETY BRIDGES & STAIRS

---

## *Preventative Maintenance Schedule*

### **Recommended Lubrication Schedule**

The pivoting axle bearings used on the Greeline Safety Bridges and Stairs require an all purpose bearing grease. Each bearing must be lubricated a minimum of 1 to 3 times per year, more if the unit is used on a limited basis. Handrail pivoting bolts must also be lubricated a minimum of 1 to 3 times per year with a dry graphite compound.

**Note:** Models manufactured with permanently lubed bearings will not require lubrication.

**Special Note:** The lubrication of the handrail bolts and bearings is important in order to keep the unit operating freely. Corrosion at these points will cause the handrails and bearing to bind, reducing the ease of movement. (Sketch 2-1 will illustrate an example of where the lubrication points for the bearing are located.)

### **Spring Tensioning Procedure**

Spring tension should be checked on a regular basis as the spring will stretch over a period of time. These adjustments should be to the operator's preference. The following steps will aid in this adjustment process. (See sketch 2-2 for a visual aid during the process.)

1. Remove the machine screws from the rubber bumper, then fold back to expose the adjustment access hole located in the nose cone.
2. With a 7/8" deep-well socket and wrench, rotate the adjustment nut clockwise to tighten the tension, counter-clockwise to reduce the tension. (One full rotation of the adjustment nut to each side adds a fair amount of tension to the unit.)

**⚠ CAUTION:** When adjusting the spring tension, allow enough remaining tension to prevent the unit from falling, but do not over tighten, allowing the unit to retract too fast. This could cause injury.

3. Once the preferred tensioning is reached, replace the rubber bumper and machine screws.

### **Annual Inspection Procedure**

Annual inspection of the entire unit for corrosion, cracks or excessively worn components will keep the equipment in top working condition.

If problems are located during this inspection, contact our customer service department for the recommended repair or rework solution.

Should you experience any problems with this shipment or the product, please do not hesitate to contact your local Green distributor, representative or the factory at 440-934-2180, FAX 440-934-4052, [www.green-mfg.com](http://www.green-mfg.com).



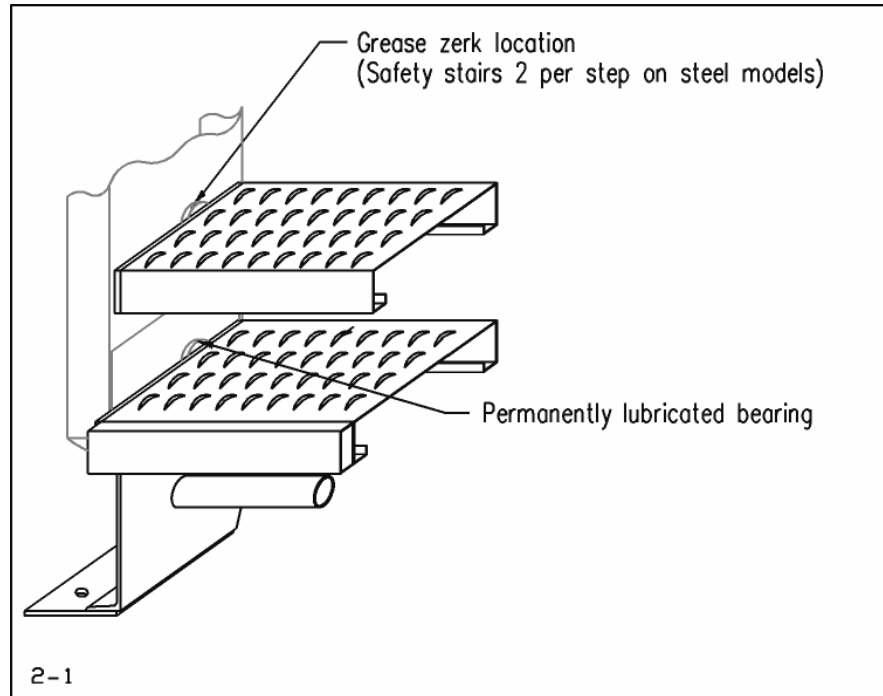
# GREEN SAFETY BRIDGES & STAIRS

## Lubrication and Spring Tensioning Drawings

The following drawings will provide a visual aid for the lubrication and spring tensioning adjustments for the safety bridge or stair.

### Sketch 2-1 Lubrication Drawing

### Sketch 2-2 Spring Adjustment Drawing



### BENKO PRODUCTS, INC.

5350 Evergreen Parkway  
Sheffield Village, OH 44054  
(440) 934-2180 Fax (440) 934-4052  
www.green-mfg.com  
Email: dingram@green-mfg.com

