

FOR NEW LOADING RACK

Questions below are for a strait, uniform width platform.

For other conditions, please submit sketch.

- A. Platform Length = _____
- B. Platform Height
 10'8" 12' 15'4" Other _____
- C. Platform Width =
 3'6" 4' 5' Other _____
- D. Access Stairs
 1 End Both Ends
Number of stairs at other locations (perpendicular to Main axis of platform): _____
(NOTE: Stairs at 45° angle unless noted)
- E. Number of Cage Ladders: _____
(Note Location)
- F. Platform Supports
 Pedestal 2 Leg Supports / Bent
- G. Material / Finish
 Aluminum
 Mill Finish
 Epoxy Coated
 Yellow Gray Black Other _____
 Steel
 Mill Finish Galvanized Primed
 Finish Painted (Provide paint specs. & prep)
 Yellow Gray Black Other _____
- H. Walk Surface
 Serrated Bar Grating (STD)
 Grip Strut
 Fiberglass Grating
- I. Canopy
 Full Half No Canopy
- 1) Material Finish - Structural Members
 Steel
 Mill Finish Galvanized Primed
 Finish Painted (Provide paint specs. & prep)
 Yellow Gray
 Black Other _____
- 2) Material - Roofing
 29 Gauge Galvanized
Option: FRP
(Specify Style & Color)

ACCESS EQUIPMENT

A. SAFETY BRIDGE/STAIRS

1. Type
 SS200/400 SB300/500 SB300RT/500
 To be Determined
2. Material / Finish
 Aluminum
 Mill Finish Epoxy Coated
 Yellow Gray Black Other _____
 Steel
 Mill Finish Galvanized Primed
 Painted (Provide paint specs & prep)
 Yellow Gray Black Other _____
3. Width
 24" (STD) 18" (NAR) 30" 36" 48"
 Other _____
4. Type of Mount
 Standard
 Top Mount
 Flush Mount
 Pivot
 Standard
 Elevating
 "Hemco" Retrofit
Material / Finish
 Mill Steel Primed Steel Galvanized Steel
5. Options
Self-leveling Hoop
 4' x 6' 6' x 6'
Hoop Height
 6" 18" 33" Other _____

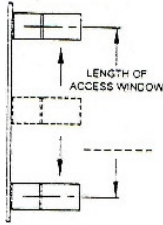
Track Mount

A. Material

- Finish Painted (Provide paint specs & prep)
- Primed Steel
- Galvanized Steel
- Mill Steel

B. Type of Handrail

- Chain Openings
- Swing Gates
- Track Mounted (Unless noted, handrail will be steel construction)



- Modified Stored Position (80 PSIG-STD)
- Sea Container Tread
- Air Assist Operation (80 PSIG-STD)
(Other systems available - Advise PSIG _____)
- Hydraulic Operation Manual Operation
- Power Operation

6. Modifications: _____

B. SAFETY SYSTEMS

1. Type/Series
 - SS200HS/400HS SB300HS/500HS
2. Length = _____
3. Material/Finish
 - Aluminum
 - Mill Finish Galvanized Primed
 - Finish Painted (Provide paint specs & prep)
 - Yellow Gray Black Other _____
4. If enclosure is longer than platform (or overhangs the end), indicate length of overhang at each end: _____
5. Options
 - Modified stored position (STD 80°)
 - Other _____
6. Power Pack Option *
7. Modifications: _____

C. HOPPER CAR/TRUCK HANDRAIL SYSTEM

1. Length = _____
2. Fixed Elevating
3. Material/Finish
 - A) Handrail
 - Aluminum
 - Mill Finish
 - Epoxy Coated
 - Yellow Gray
 - Black Other _____
 - Steel
 - Mill Finish Galvanized Primed
 - Finish Painted (Provide paint specs & prep)
 - Yellow Gray
 - Black Other _____
 - B) Supports
 - Mill Finish Galvanized Primed
 - Finish Painted (Provide paint specs & prep)
 - Yellow Gray
 - Black Other _____

4. Optional Access Platform with:
SB300RT/500RT Bridge
5. Power Pack Option *

D. ELEVATING PLATFORMS

1. Machine Screws (STD)
(Other systems optional. Advise PSIG _____)
2. Length = _____
3. Material/Finish
 - Aluminum (Platform only)
 - Mill Finish
 - Epoxy Coated
 - Yellow Gray
 - Black Other _____
 - Steel
 - Mill Finish Galvanized Primed
 - Finish Painted (Provide paint specs & prep)
 - Yellow Gray
 - Black Other _____
4. Options
 - Spring Operated Gangway
 - With Swing Gates
 - Flip Up Panels
5. Power Pack Option*

*** POWER PACK OPTION ***

- Single Station
 - Double Station
 - Non-Explosion Proof
 - Explosion Proof:
 - Class _____
 - Division _____
 - Electrical Requirement
 - Single Phase
 - Three Phase
 - Voltage _____
 - Air Driven Pump, Explosion Proof
 - Cylinder - Rod Boot Covers
 - Special Material _____
-
-

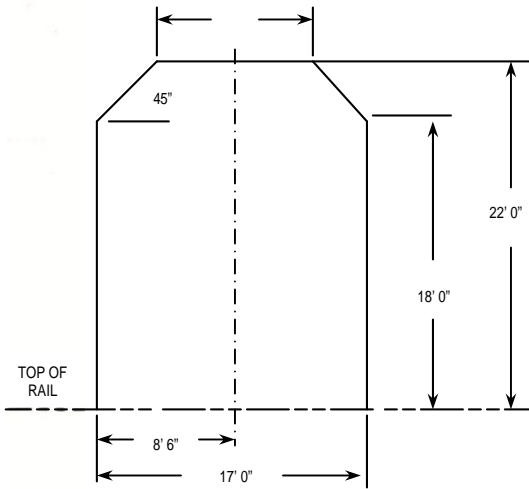
LOADING ARMS

Note riser location, quantity, etc. on vehicle & platform plan views.

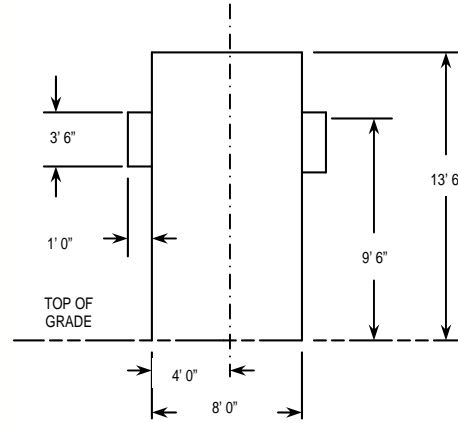
- Quantity of Arms _____
- Riser Orientation
 - Upfeed Downfeed Horizontal
- Material to be transferred
 - Product _____
 - Temperature _____°F Viscosity _____SSU
 - Concentration (If applicable) _____
 - Metals & Seals now used to handle Product _____
- Type of Vehicle
 - Tank Truck Railcar
 - Other type of loading (drums, etc.) _____
- Sizes and Capacities
 - Pipe Size _____ Vapor Pipe Size _____
 - Max PSIG _____ Discharge Rate _____GPM
 - Working PSIG _____
- Features
 - Will arm need to offer flexibility for vehicle mis-spotting?
 - Yes No Spotting Allowance ± _____FT
 - Will arm serve both sides of platform?
 - Yes No
- Splash Loaded
 - Submerge Tight Fill
 - If tight fill, specify size & type of tight fill connection:

- Is a loading valve required in the loading arm?
 - Yes No
 - If valved loader, specify size, preferred type and valve location: _____
 - If valved loader, will arm retain product?
 - Yes No
- Vapor Recovery
 - Yes No
- Vapor Recovery Attachment
 - Inflatable Hatch Seal
 - Cover Plate
 - Tapered Hatch Plug
 - None (Specify size & type of connection on end of vapor line _____)
- Type of Requirement
 - Top Loading
 - Top Unloading
 - Bottom Loading
 - Bottom Unloading
- Preferred Metals
 - All Parts Carbon Steel
 - Carbon Steel & Aluminum
 - All Parts 316 Stainless Steel
 - 316 Stainless Steel & Aluminum
 - Non-Ferrous Metals
- Preferred Seals
 - Viton
 - Buna-N
 - Food Grade Neoprene
 - Teflon
 - Not Known
 - Other _____
- Preferred Balancing Method
 - Spring
 - Right Hand Left Hand
 - Counterweights
 - Other _____
- Special Requirements for Arm
 - Steam Jacketing
 - X-Ray
 - All Welded Construction
 - High Level Sensor
 - Other _____
- Equipment by Others (Specify Weight & Location)
 - Electrical Tracing _____ LBS/FT
 - Insulation _____ LBS/FT
 - Hose _____
 - Valve _____
 - Other _____

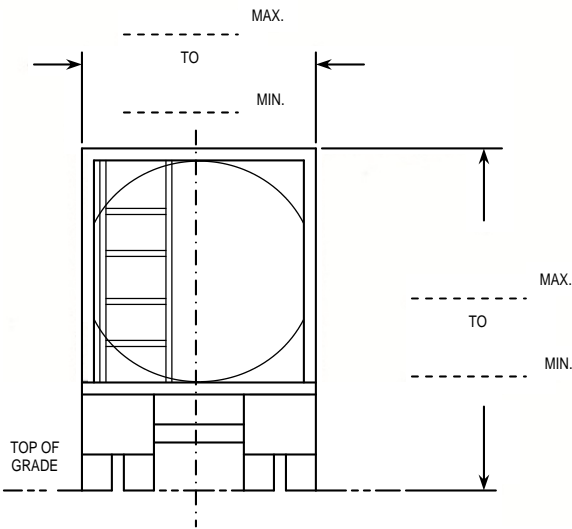
These are typical representations. Note actual configurations if different.



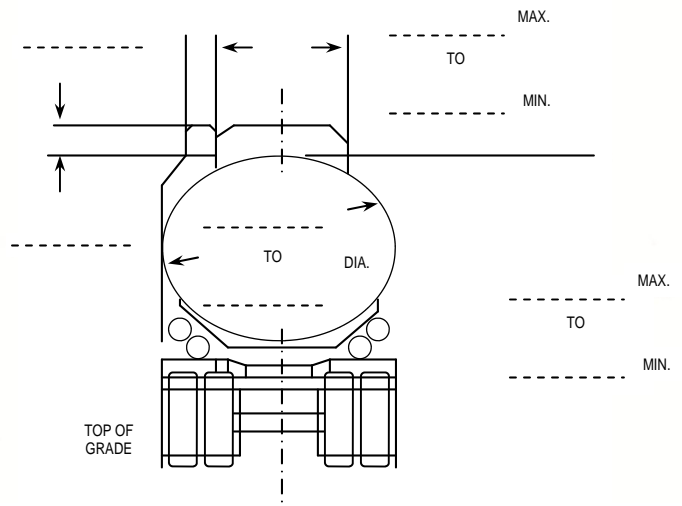
STANDARD RAILROAD ENVELOPE



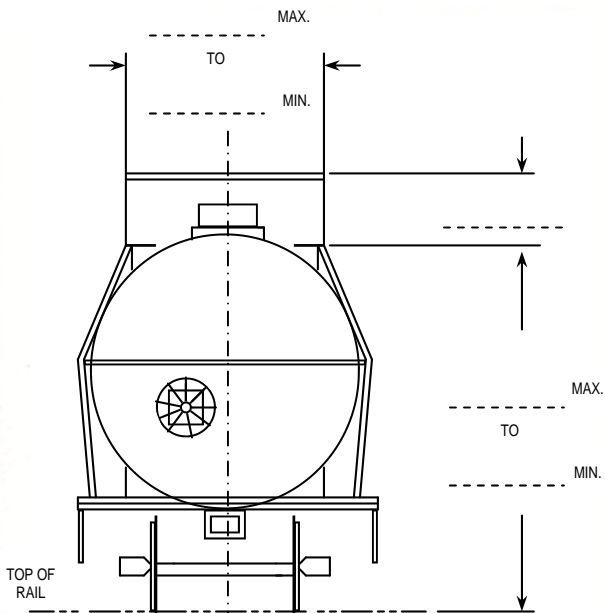
STANDARD TRUCK ENVELOPE



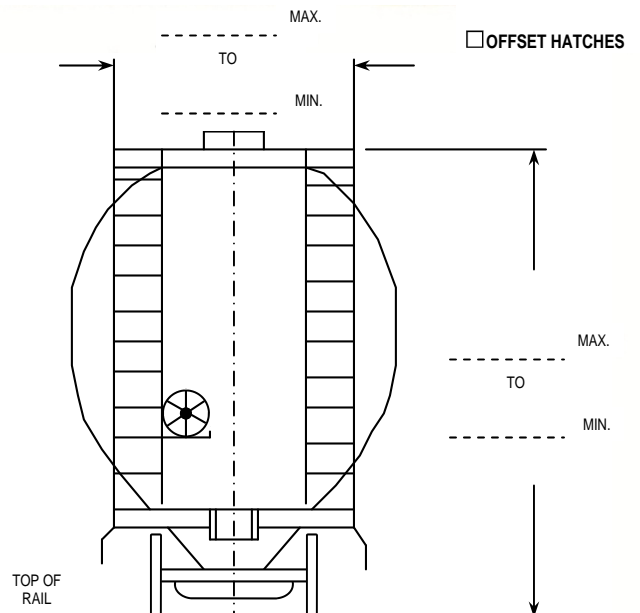
SEA CONTAINER



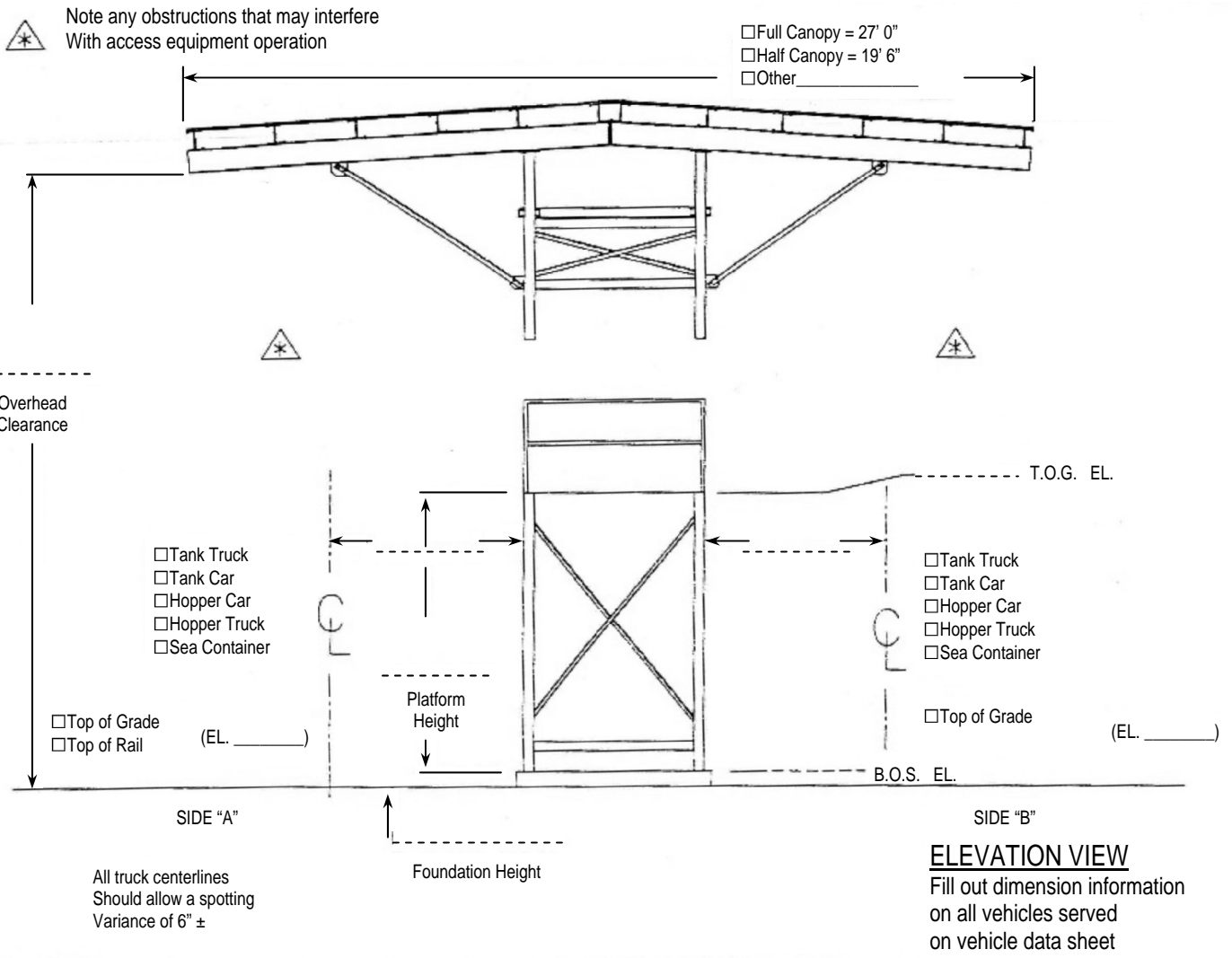
TANK/HOPPER TRUCK



TANK CAR

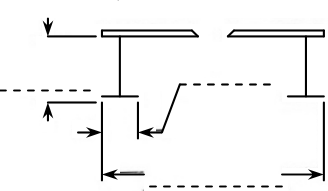
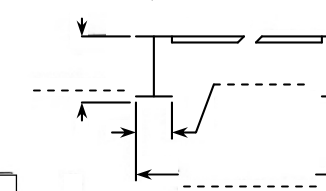
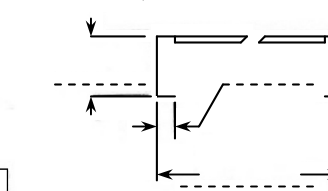
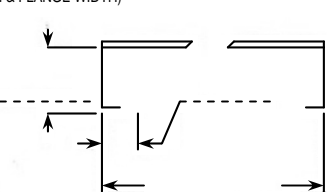
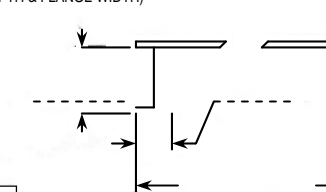
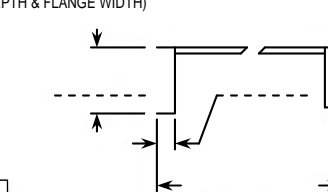


HOPPER CAR



FOR EXISTING LOADING RACK

Identify (X) which member / grating configuration matches your platform and fill in correct sizes.

<p>Grating Size _____ Material Finish _____ Member Size _____ (DEPTH & FLANGE WIDTH)</p>  <p><input type="checkbox"/></p>	<p>Grating Size _____ Material Finish _____ Member Size _____ (DEPTH & FLANGE WIDTH)</p>  <p><input type="checkbox"/></p>	<p>Grating Size _____ Material Finish _____ Member Size _____ (DEPTH & FLANGE WIDTH)</p>  <p><input type="checkbox"/></p>
<p>Grating Size _____ Material Finish _____ Member Size _____ (DEPTH & FLANGE WIDTH)</p>  <p><input type="checkbox"/></p>	<p>Grating Size _____ Material Finish _____ Member Size _____ (DEPTH & FLANGE WIDTH)</p>  <p><input type="checkbox"/></p>	<p>Grating Size _____ Material Finish _____ Member Size _____ (DEPTH & FLANGE WIDTH)</p>  <p><input type="checkbox"/></p>