



GREEN SAFETY BRIDGES (GANGWAYS)

Bridging the Gap Between Safety and Liability

Green Railcar & Tank Truck Safety Bridges are specifically designed for various industries and applications that require accessing the top of a vehicle. The Safety Bridge is designed for applications where the working range is within 15° above or below the platform height. The **Green** Safety Bridge (gangway) provides a solution for various applications that have an access problem.

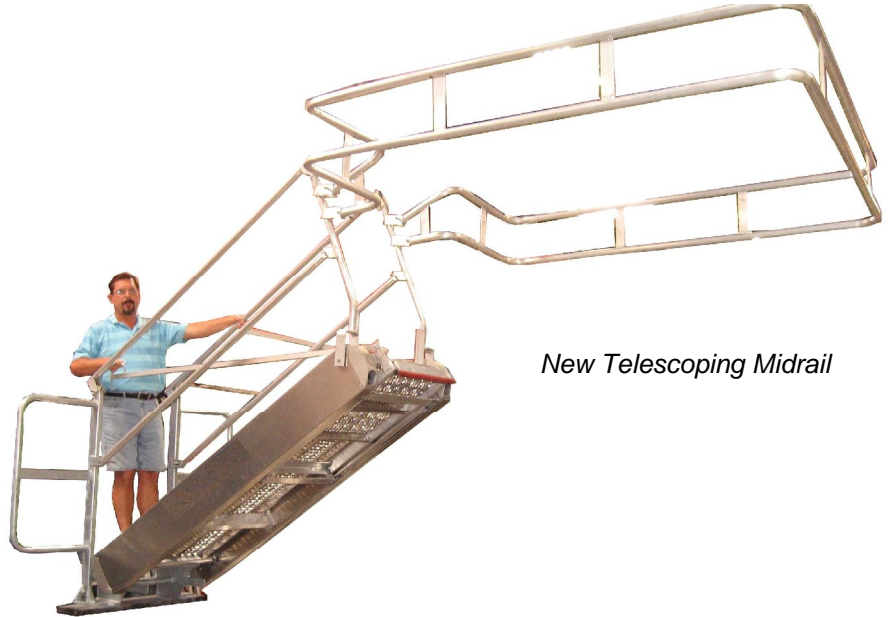
Green Safety Bridges provide safe access from the loading rack or dock to an elevated manway during a loading/unloading process. Our Safety Bridges are designed with non-skid grip strut walking surfaces.

Green Safety Bridges can be manufactured from galvanized steel, aluminum, and fiberglass (or a combination of each). Benko Products, Inc. can design a Safety Bridge to meet any application that your operation requires. Aside from the typical fixed reach Safety Bridges, several adjustable reach Safety Bridges are available.

Maneuvering the Safety Bridge is performed by hand. Simple, compact tension spring balances make all movements easy. A slight push or pull positions the gangway for safe access. Each unit is equipped with a locking mechanism for storage in the vertical position.

If adjustable reach Safety Bridges are required, the extendable portion of the Safety Bridge can be extended and locked in place with the positioning handle.

Combined with these features, several advantages listed next make **Green** your choice for safety.



New Telescoping Midrail

SB506RT Aluminum Safety Bridge

- Folding tubular handrails with midrails on each side of the bridge for increased operator safety and compliance with OSHA standards as we interpret them for 200 lbs. directional force. New telescoping midrail for ease of installation.
- Neoprene bumpers to eliminate damage to the vehicles being serviced.
- Axles have self-aligning, permanently lubed bearings for years of lasting service.
- A variety of finishes are available: standard safety yellow enamel, hot dipped galvanized, uncoated or anodizing for aluminum models.
- Optional side mount brackets make side mounting to your existing structure easy.
- Optional welded stops prevent the Safety Bridge from traveling beyond a predetermined position.
- Larger models may require the

- use of a manual or electrically operated hydraulic lift package.
- Tension springs are enclosed in the side panels to prevent pinch points and corrosion to the springs.



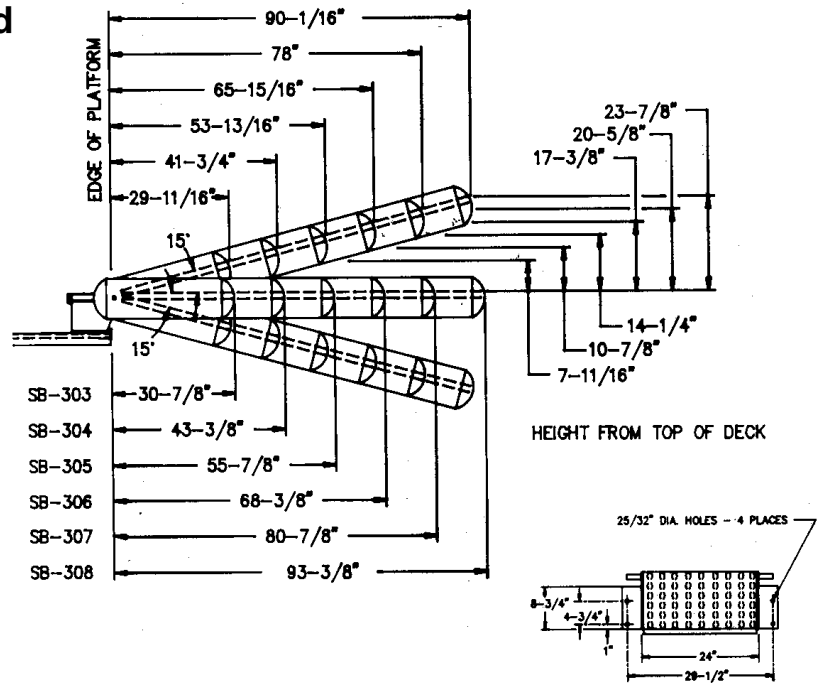
BENKO PRODUCTS, INC.
5350 Evergreen Parkway,
Sheffield Village, OH 44054
(440) 934-2180 Fax (440) 934-4052
www.benkoproducts.com
Email: dingram@green-mfg.com



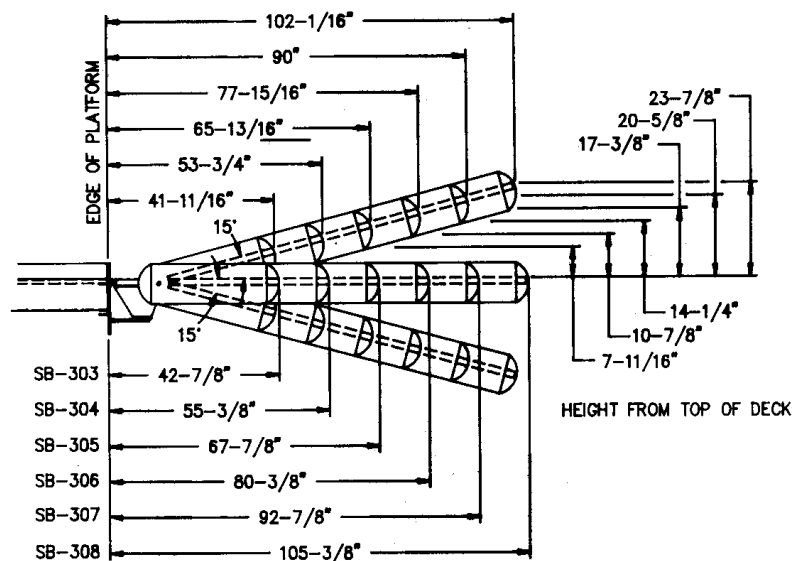
GREEN WORKING RANGE CHART

300 & 500 Series Safety Bridges

Range when Top Mounted



Range when Side Mounted



BENKO PRODUCTS, INC.
 5350 Evergreen Parkway,
 Sheffield Village, OH 44054
 (440) 934-2180 Fax (440) 934-4052
 www.benkoproducts.com
 Email: dingram@green-mfg.com



GREEN SAFETY BRIDGES (GANGWAYS)

Bridging the Gap Between Safety and Liability

Steel Safety Bridges, Fixed Reach

The **Green** SB300 series Safety Bridges are designed specifically for top loading or inspection installations where the vehicle is located at a fixed position from the platform. The working range is limited to the level of the platform and the vehicle being serviced.

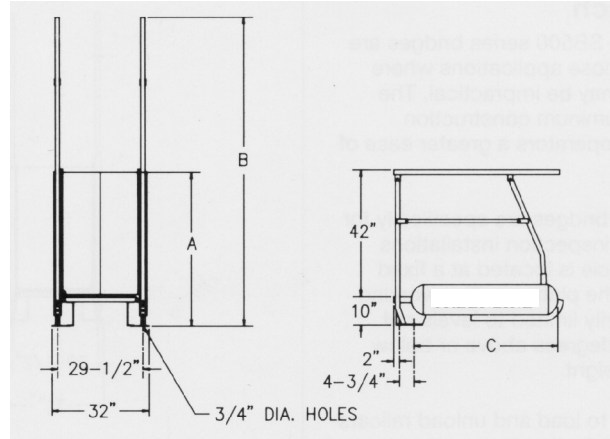
Primarily used to load and unload railcars that have a standard platform width, the Safety Bridge can also be used for transport truck applications as well. The Safety Bridge can be equipped with an optional self-leveling safety hoop, and can be mounted off the side of the platform with flush mount brackets. Some larger models may require manual lift or electrically operated hydraulic packages for operator ease.

Steel Safety Bridges, Adjustable Reach

The **Green** SB300RT series Retractable Safety Bridges are designed specifically for top loading or inspection installations where the vehicle is located at various positions from the platform. The retractable Safety Bridge is also useful at railcar sites that require the servicing of cars with varying platform widths.

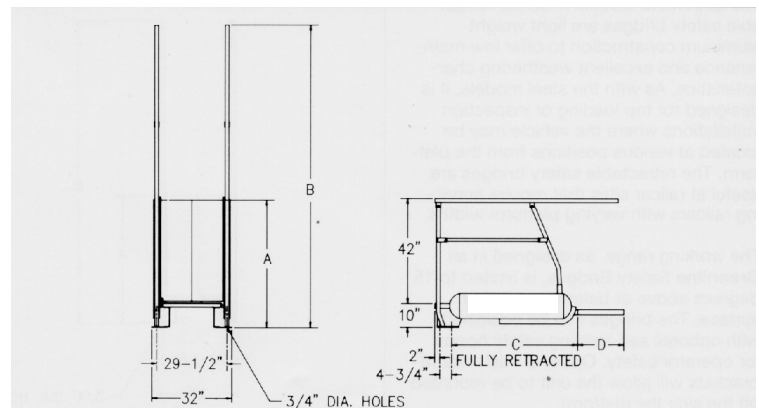
The working range is primarily limited to levels not exceeding 15° above or below the platform height. The Safety Bridge can be equipped with an optional self-leveling safety hoop and can be mounted off the side of the platform with flush mount brackets. Some larger models may require manual or electrically operated hydraulic lift packages for operator ease.

Green series SB300 and SB300RT Safety Bridges are available in various standard lengths or customized to fit the application. Standard models have a walking area 24" wide.



Typical Dimensions*						
Model	A		B		C	
	in.	mm	in.	mm	in.	mm
SB303	39	991	90	2286	35 1/8	829
SB304	51 1/2	1308	102 1/2	2604	47 5/8	1210
SB305	64	1626	115	2921	60 1/8	1527
SB306	76 1/2	1943	127 1/2	3239	72 5/8	1845
SB307	89	2261	140	3556	85 1/8	2162
SB308	101 1/2	2578	152 1/2	3874	97 5/8	2480

* Custom dimensions available



Typical Dimensions*								
Model	A		B		C		D	
	in.	mm	in.	mm	in.	mm	in.	mm
SB303RT	39	991	98	2489	35 1/8	892	12	305
SB304RT	51 1/2	1308	110 1/2	2807	47 5/8	1210	18	457
SB305RT	64	1626	123	3124	60 1/8	1527	22	559
SB306RT	76 1/2	1943	135 1/2	3442	72 5/8	1845	22	559

* Custom dimensions available



GREEN SAFETY BRIDGES (GANGWAYS)

Bridging the Gap Between Safety and Liability

Aluminum Safety Bridges, Fixed Reach

New Stronger Design

The **Green** SB500 series Safety Bridges are designed for those applications where steel Safety Bridges may be impractical. The light weight aluminum construction with galvanized steel back box sections and back uprights provides your operators a greater ease of movement.

The aluminum Safety Bridges are specifically for top loading or inspection installations where the vehicle is located at a fixed position from the platform. The working range is primarily limited to levels not exceeding 15° degrees above or below the platform height.

Primarily used to load and unload railcars or transport trucks that have a standard platform width. The Safety Bridge can be equipped with and optional self-leveling safety hoop and can be mounted off the side of the platform with flush mount brackets.

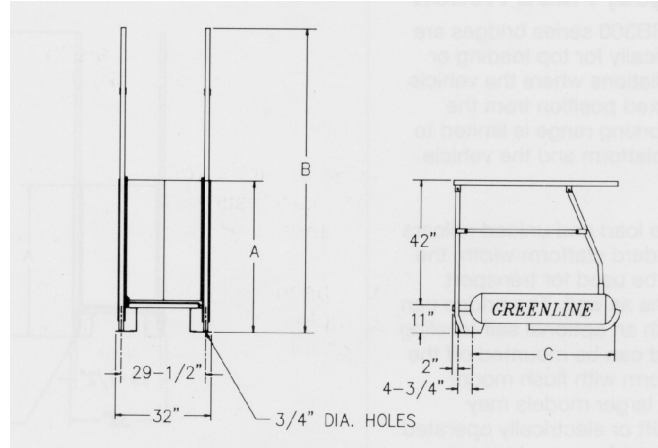
Aluminum Safety Bridges, Adjustable Reach

New Stronger Design

The **Green** SB500RT series Retractable Safety Bridges are light weight aluminum construction to offer low maintenance and excellent weathering characteristics, combined with galvanized steel back box sections and back uprights. As with the steel models, it is designed for top loading or inspection installations where the vehicle may be located at various positions from the platform. The retractable Safety Bridges are useful at railcar sites that require servicing railcars with varying platform widths.

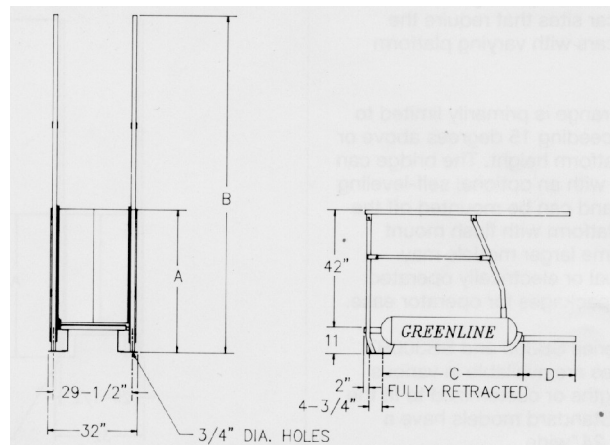
The working range, as designed in all **Green** Safety Bridges, is limited to 15° above or below the platform surface. The Safety Bridges can be equipped with optional self-leveling safety hoops for operator safety. Optional flush mount brackets will allow the unit to be mounted off the side of the platform.

Green series SB500 and SB500RT Safety Bridges are available in various standard lengths or customized to fit the application. Standard models have a tread width of 24".



Typical Dimensions*						
Model	A		B		C	
	in.	mm	in.	mm	in.	mm
SB503	39 3/4	1010	90	2286	35 1/8	892
SB504	52 1/4	1327	102 1/2	2604	47 5/8	1210
SB505	64 3/4	1645	115	2921	60 1/8	1527
SB506	77 1/4	1962	127 1/2	3239	72 5/8	1845
SB507	89 3/4	2280	140	3556	85 1/8	2162
SB508	102 1/4	2597	152 1/2	3874	97 5/8	2480

* Custom dimensions available



Typical Dimensions*								
Model	A		B		C		D	
	in.	mm	in.	mm	in.	mm	in.	mm
SB503RT	39 3/4	1010	98	2489	35 1/8	892	12	305
SB504RT	52 1/4	1327	110 1/2	2807	47 5/8	1210	18	457
SB505RT	64	1626	123	3124	60 1/8	1527	22	559
SB506RT	76 1/2	1943	135 1/2	3442	72 5/8	1845	22	559

* Custom dimensions available